

vinyl re-fresh is the number one choice to revitalize faded sheet vinyl decking

Modernize and rejuvenate the appearance of your vinyl decking membrane with our proprietary blend of PVC and Elastomeric resins.

Modern Colour Choices: vinyl re-fresh comes in a satin finish and can be tinted to any of our six color choices; or custom tint to any mid tone/medium tint base formula. Check the integrity of your sheet vinyl. Pay close attention to the seams, around the posts and up against the building. Any cuts, tears or loose seams must be mended prior to coating.

Please note: vinyl re-fresh is not a waterproofing application for vinyl decking but a way to make your deck look fresh. Any pattern that you once had on your vinyl will now be a solid colour. vinyl re-fresh may not be suitable for all sheet vinyl.

Vinyl decking Instructions

Application rate: 2 coats required (first time application). 200 sq ft. per gallon per coat.

Directions:

1. Thoroughly clean the deck using THE DUKE, cleaner and degreaser. Rinse well and let dry completely.
2. Stir the vinyl re-fresh until mixed to a consistent texture.
3. Using a paint brush, paint around railings, posts, the transition to the house and all the edges around the deck.
4. Prepare the roller and attach the extension pole.
5. Using a short nap roller, roll out the coating completely covering the surface. Let dry at least 2 hours prior to second application.
6. Start the second application in a different corner and work at right angles to the first application.

NOTE: Be sure to intermix vinyl re-fresh when it reaches the half way point to ensure colour uniformity.

When to apply:

Apply on a warm day when the temperature is between 10°C/50°F and 30°C/86°F. Ideally apply when the deck is in the shade.

Do not apply in direct sun. Do not apply if rain is forecast within 48 hours after application.

Dry time: vinyl re-fresh dries to the touch in 2 hours at the median temperature of 21°C/70°F. 72 hours for a full cure.

Reapplication:

To maintain your deck surface, re-apply 1 coat of vinyl re-fresh every 3 to 4 years.

Need Help?

Call our professional customer care line:

Lower mainland: 604-942-0722

Toll Free: 1-800-943-8226

Ducan Industries
1920 Broadway St.
Port Coquitlam, B.C.
V3C 2N1
www.ducan.com



08.2015
Printed in Canada

ducan vinyl re-fresh

New life for faded vinyl siding and sheet vinyl decking
Nouvelle vie pour un revêtement ou une membrane de vinyle terne

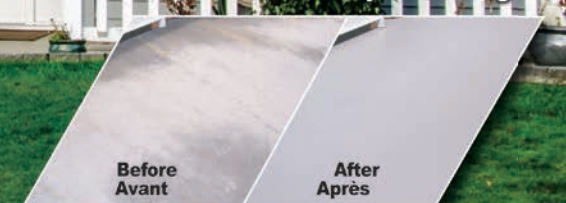


BEFORE

Renews and extends the life of vinyl siding and decking

- Withstands expansion and Contraction
- Provides maximum durability
- Easy clean, satin finish
- Environmentally Friendly
- Water Clean up

Also for Vinyl Decking



Before
Avant

After
Après

vinyl re-fresh is the number one choice to revitalize dated vinyl siding

Modernize the appearance of your vinyl siding and rejuvenate your home's exterior with our proprietary blend of PVC and Elastomeric resins.

Modern Colour Choices: **vinyl re-fresh** comes in a satin finish and can be tinted to any of our six color choices; or be custom tinted to any mid tone/medium tint base formula.

Vinyl Siding Application Instructions

First time application: Most vinyl siding applications require one coat. Note: White or lightly coloured vinyl siding may require two applications to cover thoroughly.

Coverage: Apply at the rate of 250 to 350 sq ft per gallon. Rate is dependent upon the texture of the vinyl siding.



Preparation prior to application:

1. Measure the square footage prior to application. Be sure you have an adequate amount of **vinyl re-fresh**, preferably from the same batch number. Be sure to have all supplies on hand and thoroughly read and understand all instructions before beginning. Preparation is very important for a successful project. Be mindful of the weather and do not apply if rain is in the forecast within 48 hours after application
2. Thoroughly clean vinyl siding, as **vinyl re-fresh** will not adhere to algae, moss, dirt, dust or oxidized faded vinyl siding. Use THE DUKE - a powerful concentrated cleaner and degreaser to prepare the siding for application. Dilute 10 to 1 with hot water and use a stiff bristle broom or pressure washer. Rinse with copious amounts of water and let the siding dry completely before starting your application.
3. Mask off all windows, frames, doors, outlets, downspouts, trim, soffits, or any area that is not to be painted. Use plastic for the ground to protect plants and sidewalks.
4. Stir the **vinyl re-fresh** until no sediment remains in the bottom of the container.
5. With a 4" paint brush cut in and around tight spaces or areas where a paint sprayer or roller may not be able to reach. Cut in 8" to 12" up against the soffits.

Hint: Using a 24" or 48" paint spray shield may reduce the amount of prep work required. Having an assistant to hold the paint/spray shield while you are brushing or spray painting is helpful.



Directions:

Note: If using more than one container, it is important to inter-mix containers at the half way point to ensure a consistent colour. Mix well. Be sure to keep all containers tightly closed while not in use.

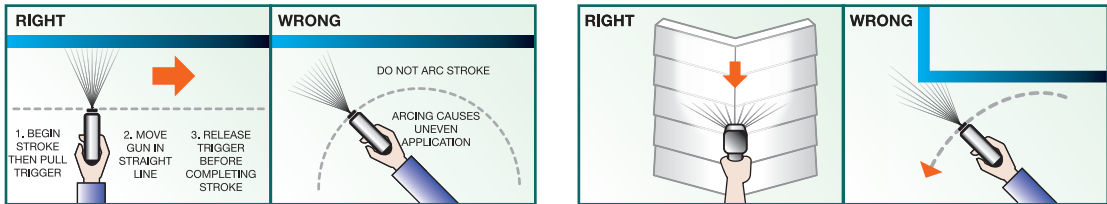
Roller and Brush Application - Use a 4", 5" or 9" short nap (3/8" or 6 mm) lint free fabric roller sleeve or a foam roller sleeve, whichever best suits your vinyl siding profile. Work from left to right, one row and section of siding at a time. Apply **vinyl re-fresh** by roller to those areas wide enough to accommodate the roller-sleeve. Brush the areas (like the under lip of the siding) that are too tight to accommodate a roller. Evenly apply product as to not plug the drain holes in the vinyl siding.

Sprayer Application - Read **Preparation prior to application** before beginning.

Be aware that every paint sprayer is distinctive; thinning **vinyl re-fresh** may be required to produce a smooth even spray pattern from the spray tip. **vinyl re-fresh** can be thinned up to 10% with water. This may be necessary with some paint sprayers.

Tips: To avoid splatters, prime the spray gun by spraying into a cardboard box. Do not scrape, stir or add partially dried paint into containers, as this will clog the spray gun. Never leave leftover paint in the spray gun. Once dried it will be difficult to remove. Refrain from spraying on a windy day.

Recommended spray equipment - Airless Graco Paint Sprayer, Tip Size 5/19,5/17. Wagner Paint Sprayer.



Where to start - Working from left to right and one row of siding at a time, evenly spray from the top of the wall to the bottom. Working within a 10' X 10' section, spray from side to side one row of siding at a time. Keep a consistent distance from the house, generally 12". An arcing spray will result in an uneven coat. Inspect painted section immediately after spraying and touch up as necessary by using a brush or by additional spraying.

IMPORTANT: When not in use, keep container tightly closed to avoid the product from lumping or a surface skin to form. Be aware that paint lumps can plug the spray equipment.

Clean up: Use soap and water to clean brushes, rollers and spray equipment before the product has a chance to fully dry. Dried paint may require mineral spirits.

Storage: Keep from freezing

When to apply:

Apply on a warm day when the temperature is between 10°C/50°F and 30°C/86°F. Ideally apply when the siding is in the shade. Do not apply in direct sun. Do not apply if rain is forecast within 48 hours after application.

Dry time: **vinyl re-fresh** dries to the touch in 2 hours at the median temperature of 21°C/70°F. 72 hours for a full cure.

Tips: Avoid jerky motions when spraying, as sudden movements may spatter the paint. Never leave leftover paint inside the spray gun. (Ducan will not be liable for spray gun damage)

Troubleshooting: For a list of troubleshooting questions and answers, please visit our website at ducan.com

